

# Gel-a-Peel™

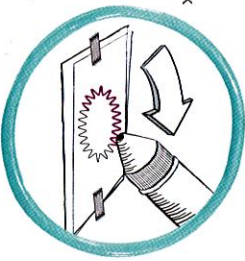
## TIPS & TRICKS

Conforms to  
ASTM D-4236.



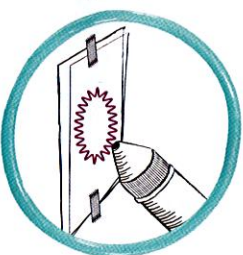
### GETTING STARTED

- Secure the template and clear drawing sheet to the work surface with masking tape.
- Work from the top of the template to the bottom. If you are right handed, work around the design from left to right to prevent smearing. If you are left handed, work from right to left.
- Draw outside the template lines to make designs bigger or inside the template lines to make them smaller.



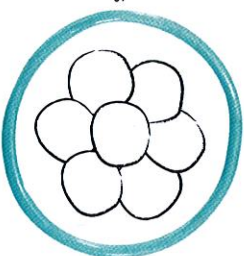
### CLEANING, REPAIRING & STORING

- If you make a mistake, wipe the gel off of the clear drawing sheet with a paper towel before it hardens.
- To repair a broken piece, reapply gel over the broken section and wait for it to dry.
- Lay your designs flat when displaying or storing to keep their shape.
- To clean the tips, allow gel in the tip to harden. Then use the spatula tool to scoop out the hardened gel.



### DESIGNING

- With a steady hand, squeeze the tube slowly over the template for straight and precise lines.
- Always make sure the gel lines, spikes, different colors and other designs are touching.
- To make your design sturdy, overlap your lines and make your designs thick.
- Reinforce any thin spots or lines that don't touch by adding extra gel.
- Rotate the template and clear drawing sheet as you create your design.
- Wipe the tip on a paper towel to remove excess gel before starting a new design technique or project to keep designs neat and precise.



### DRYING & WEARING

- Wait 5-10 minutes before adding additional colors to your design to allow the first color to dry slightly.
- Roll bracelets onto your wrist. Don't stretch your finished projects or they might break.



### CAUTIONS

**⚠ WARNING:** Not suitable for children under 6 years. Use under adult supervision.

- May contain functional sharp point.
- Keep away from eyes. Use in a well-ventilated area. Do not eat or drink while handling this product.
- Avoid contact with skin before the compound is completely dry.
- Do not apply on furniture. To remove compound, wait for it to dry completely and peel off. Product may not be completely removed from all surfaces.
- Wash hands after use.

#### PLEASE KEEP THIS MANUAL AS IT CONTAINS IMPORTANT INFORMATION



The preferred method of contact for Customer Service is through our e-mail contact form at [www.mgae.com](http://www.mgae.com)

16300 Roscoe Blvd.  
Van Nuys, CA 91406 U.S.A.  
(800) 222-4685  
Printed in China  
U.S. Patent Pending

MGA Entertainment UK Ltd.  
50 Presley Way, Crownhill  
Milton Keynes, MK8 0ES  
Bucks, UK  
+ 0800 521 558

[www.gelapeel.com](http://www.gelapeel.com)

Visit [www.mgae.com](http://www.mgae.com)  
to register your product  
and to enter our sweepstakes  
(No purchase necessary)

© 2016 MGA Entertainment, Inc. GEL-A-PEEL™ is a trademark of MGA in the U.S. and other countries.  
All logos, names, characters, likenesses, images, slogans, and packaging appearance are the property of MGA.

1115-0-E/INT

# Gel-a-Peel™ CREATE & DESIGN

IMPORTANT: Protect the play area before use.



**1 TIP**  
Uncap the tube. Remove and keep the protective plug. Then, twist on a tip.

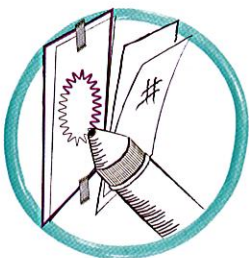
## 2 DRAW

Place a template under the clear drawing sheet on a flat surface. Press the tube tip against the clear drawing sheet and squeeze as you slowly follow the pattern.



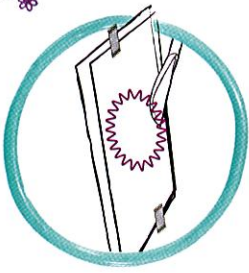
## 3 ROLL

Roll the tube down from the top as you squeeze to push the compound toward the tip. Tape down the rolled portion if necessary.



## 4 PLUG & CAP

When you finish using a color, remove the tip. Then, squeeze the gel as close to the tube opening as possible and firmly push the plug into the tube. Twist on the cap.



## 5 PEEL

Let your design dry completely according to the time on the template. Then, use the included spatula to peel it from the clear drawing sheet.



## DESIGN STYLES

Apply these design styles to any of your creations. Twist on a design tip, press it against the clear drawing sheet and squeeze. The longer you squeeze, the bigger the shape will be. Try these techniques with the design tips included in some Gel-a-Peel™ pack. Purchase other packs to collect them all!

### 1 ROUND TIP

To create a beaded effect, continually pull and push tube at an angle.



### 2 STAR TIP

To create a beaded effect with the star tip, continually pull and push the tube at an angle.



### 3 RAKE TIP

To create a wavy ribbon effect, use the rake tip to continually and push the tube at an angle.



### 4 SPIKE EFFECT

To create a spike effect, squeeze out the gel until it reaches the size you want. Then stop squeezing and pull the tube away. Repeat this step with all of the spike



### 5 RAINBOW EFFECT

To create a color gradient effect, put the same tip you were using on a different color tube without cleaning it and continue drawing.

